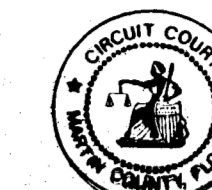


UNINCORPORATED MARTIN COUNTY
 MAP OF THE SUBDIVISION OF THE MILES OR HANSON GRANT
 P.B. 1, PG. 11
 (PALM BEACH COUNTY RECORDS)

This right of way map when recorded is an instrument of conveyance, transferring in accordance with the Florida Statutes 337.29, all right, title, and interest in the road, street, or highway shown herein, from the Florida Department of Transportation to Martin County.

Recorded in Public Records of Martin County, Florida, this 18 day of April, A.D. 2014, in Road Plat Book 17, Page 23.

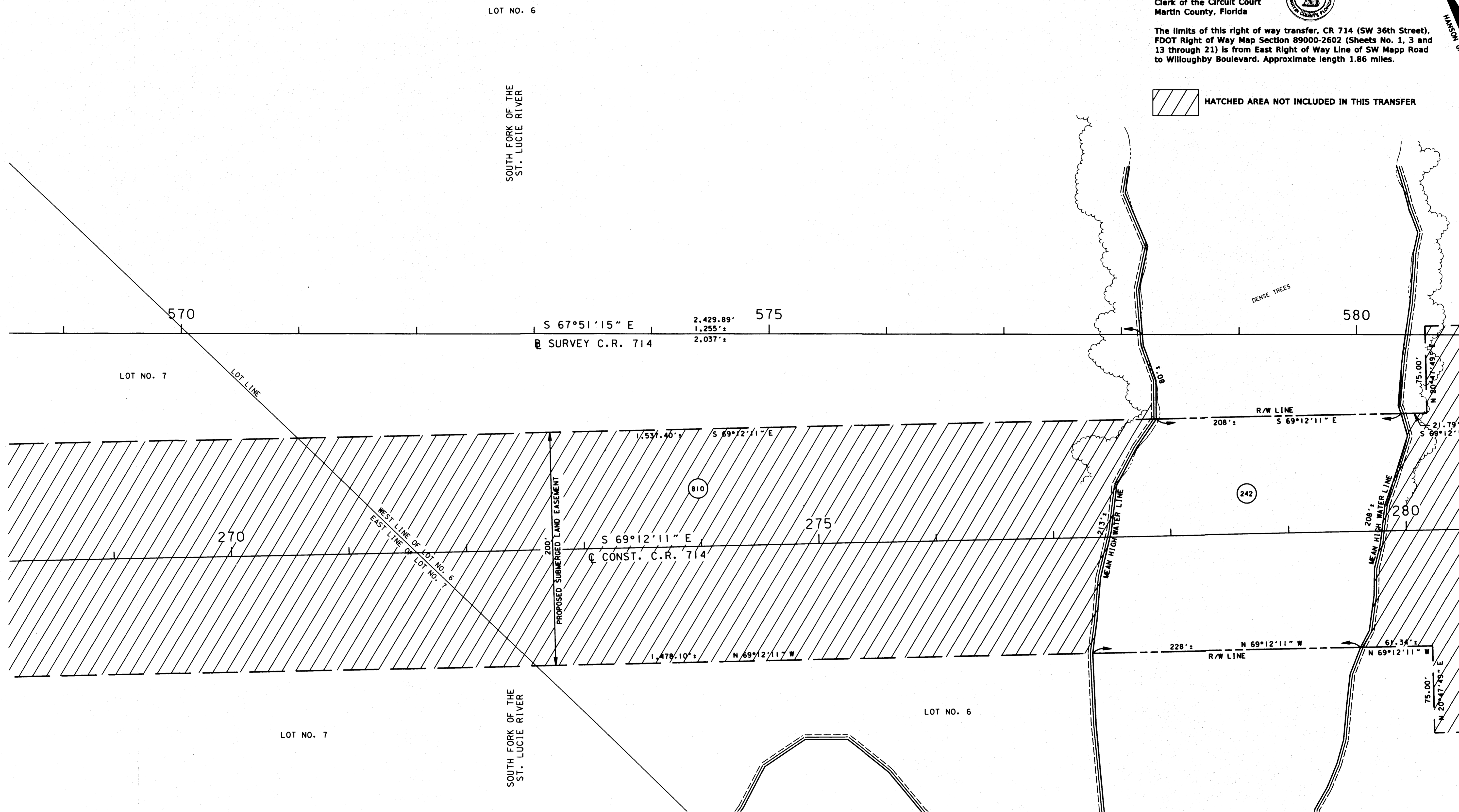
Collette De
 Clerk of the Circuit Court
 Martin County, Florida



The limits of this right of way transfer, CR 714 (SW 36th Street), FDOT Right of Way Map Section 89000-2602 (Sheets No. 1, 3 and 13 through 21) is from East Right of Way Line of SW Mapp Road to Willoughby Boulevard. Approximate length 1.86 miles.

SCALE: 1" = 40'
 HANSON GRANT

HATCHED AREA NOT INCLUDED IN THIS TRANSFER



MAP OF THE SUBDIVISION OF THE MILES OR HANSON GRANT
 P.B. 1, PG. 11
 (PALM BEACH COUNTY RECORDS)

UNINCORPORATED MARTIN COUNTY

NOT A SURVEY

SEE SHEET ONE FOR LEGEND AND GENERAL NOTES

C.R. 714 (S.W. MARTIN HWY.)
 FROM THE FLORIDA TURNPIKE TO S.E. WILLOUGHBY BLVD.

RIGHT OF WAY MAP	FLORIDA DEPARTMENT OF TRANSPORTATION RIGHT OF WAY MAPPING	APPROVED BY <i>[Signature]</i> DATE 2/23/09	BY DURYE A DATE 04-12-02	FED. PROJ. NO. SEE COVER SHEET	SECTION 89000-2602	MAPS PREPARED BY KEITH B SCHNARS, P.A.	FIELD BOOK NO. 5	
		DISTRICT RIGHT OF WAY SURVEYOR	FINAL SANCHEZ 09-30-02	COUNTY ROAD NO. 714	MARTIN COUNTY	W.P.I. No. N/A	SEE SHEET NO. 1	
		REVISION	BY DATE	REVISION	BY DATE	REVISION	BY DATE	SCALE 1" = 40'
		REVISION	BY DATE	REVISION	BY DATE	REVISION	BY DATE	ITEM/SEGMENT No. 230978.1